



# INDOFINE Chemical Company, Inc.

121 Stryker Lane, Bldg. 30, Suite 1 • Hillsborough, NJ 08844 • U.S.A.

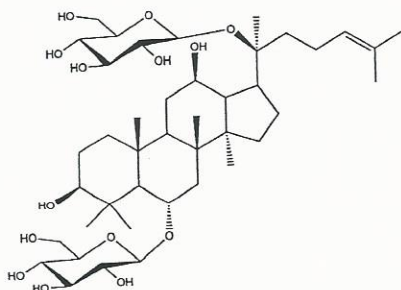
Phone: (908) 359-6778 • FAX: (908) 359-1179

website: [www.indofinechemical.com](http://www.indofinechemical.com)

e-mail: [chemical@indofinechemical.com](mailto:chemical@indofinechemical.com)

## CERTIFICATE OF ANALYSIS

<u>Catalog Number:</u>	020101S
<u>Product Name:</u>	<b>GINSENOSIDE Rg1 with HPLC</b>
<u>Chemical Family:</u>	Saponins
<u>Cas Number:</u>	[22427-39-0]
<u>Lot Number:</u>	1603746
<u>Chemical Formula:</u>	$C_{42}H_{72}O_{14}$
<u>Molecular Weight:</u>	801.02
<u>Appearance:</u>	White powder
<u>Loss on drying:</u>	1.5%
<u>Storage:</u>	This product is stable at ambient temperature for several weeks. However, optimum long-term storage may require lower temperature (<-18°C). Place in a desiccator under vacuum before use. Protect from light.
<u>Purity(HPLC):</u>	98.88%





# INDOFINE Chemical Company, Inc.

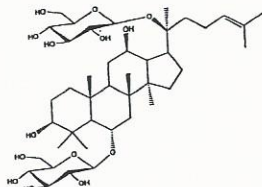
121 Stryker Lane, Bldg. 30, Suite 1 • Hillsborough, NJ 08844 • U.S.A.

Phone: (908) 359-6778 • FAX: (908) 359-1179

website: [www.indofinechemical.com](http://www.indofinechemical.com)

e-mail: [chemical@indofinechemical.com](mailto:chemical@indofinechemical.com)

## HPLC ANALYSIS

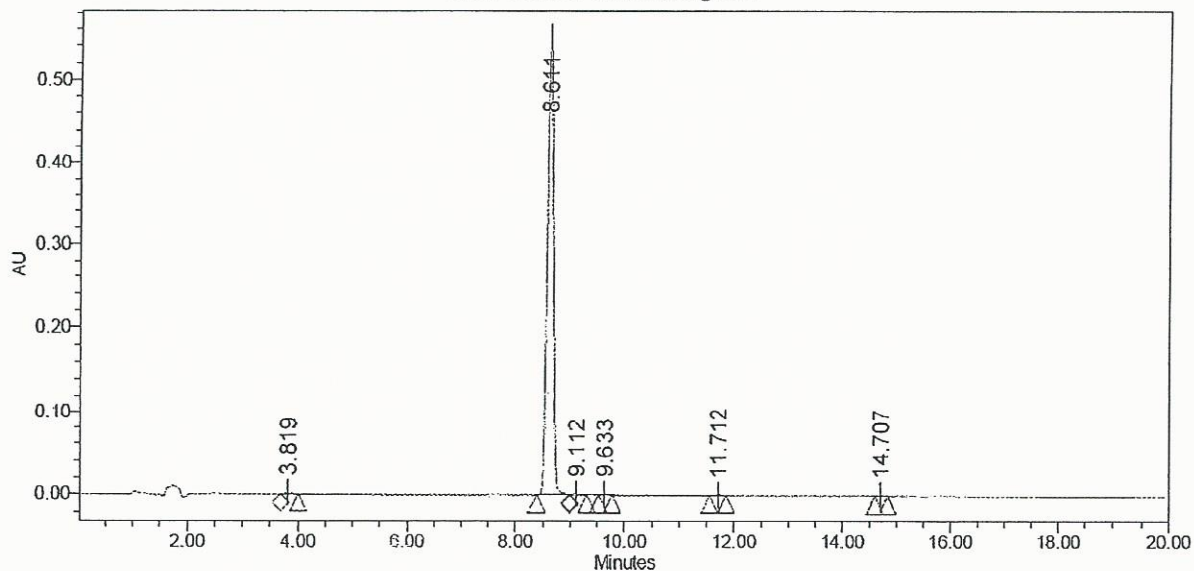


Catalog No.: 020101S  
Product Name: Ginsenoside Rg1  
Lot No.: 1603746

### SAMPLE INFORMATION

Sample Name:	Ginsenoside Rg1	Acquired By:	System
Sample Type:	Unknown	Sample Set Name:	
Vial:	90	Acq. Method Set:	Ginsenoside Rg1
Injection #:	1	Processing Method:	Samples
Injection Volume:	7.00 ul	Channel Name:	205.0nm
Run Time:	20.0 Minutes	Proc. Chnl. Descr.:	PDA 205.0 nm

Auto-Scaled Chromatogram



Peak Results

Name	RT	Area	% Area	USP Plate Count	USP Resolution
1	3.819	16557	0.38	5915.37	
2	8.611	4261977	98.88	28685.30	23.54
3	9.112	13851	0.32		2.45
4	9.633	7777	0.18	38295.66	2.59
5	11.712	7140	0.17	42274.77	9.88
6	14.707	2989	0.07	71029.78	14.08